



# EdgeWise

## SOFTWARE

### EFFICIENCY, ACCURACY, SPEED, AND INTELLIGENCE

With the ever increasing demand for intelligent models of structures and processing facilities, today's geospatial professionals require highly automated solutions to process and extract information from 3D laser scanning data. Trimble EdgeWise is an ideal solution to quickly transform point clouds into actionable models.

Trimble® EdgeWise™ software complements Trimble's 3D scanners and Trimble RealWorks® software to provide efficient end-to-end workflows in producing accurate BIM-ready models. From scanned pointcloud data, the software automatically detects structural elements such as pipes, conduit and beams, then precisely models them using the dimensions and geometries included in a vast library of common elements.

#### Flexibility for a Variety of Projects

Projects vary as do your scanning needs. Whether you are looking to provide as-built information or collecting current conditions for a renovation project, Trimble EdgeWise can help you extract the individual elements and produce the information you need to make decisions. Automated routines enable you to quickly and intelligently extract and model piping, duct, conduit, walls, structural beams or other elements to be exported to your modeling platform of choice.

#### Finishing & QA Tools

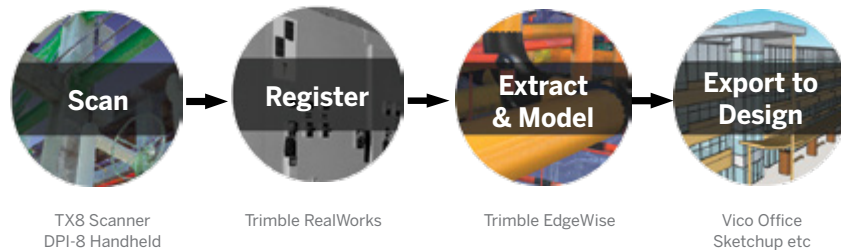
Trimble EdgeWise quality assurance tools allow you to check the accuracy of every extracted element to ensure your model is true to the point cloud. Any poorly fitted object can be easily and quickly resized and adjusted to the points to give you precise control and accuracy of your model. The advanced modeling methodology in the software allows you to efficiently extract and precisely position every object of interest. Complex details such as valves, dimensional transitions, and custom fabricated ductwork are accurately and easily modeled.

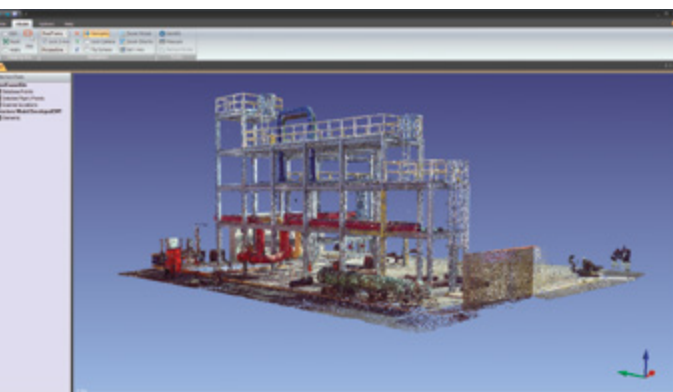
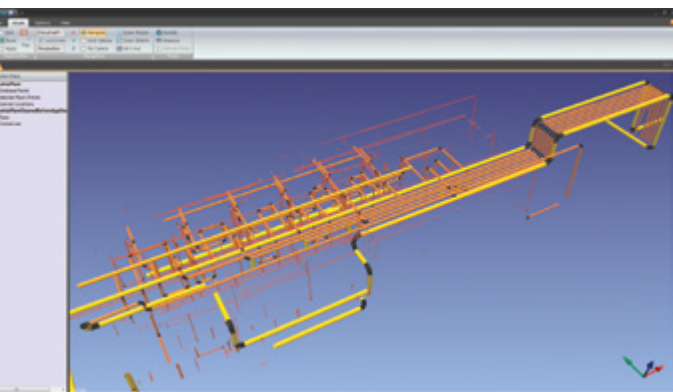
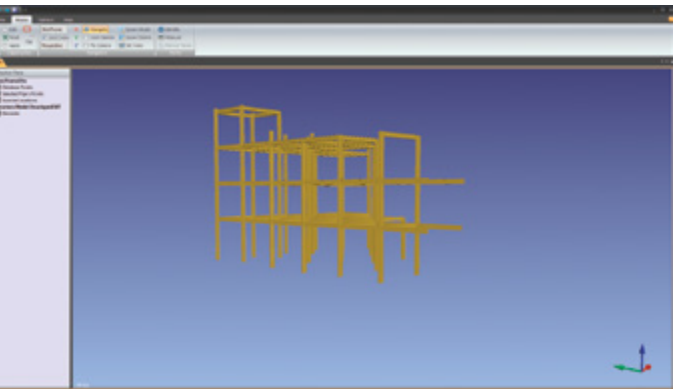
#### Reduce Rework

Objects and features extracted, modeled and finished in Trimble EdgeWise are easily imported into a variety of CAD solutions. With the right CAD exchange formats, extracted items import as functional families maintaining the associated attribute data. This eliminates the need to adjust the models or re-enter attributes.

### Key Features

- ▶ Automated feature extraction to quickly identify pipes, conduit, structural steel, ducts, structural concrete, walls, windows, and doors in 3D laser scanning point clouds
- ▶ Rapid modeling using libraries to ensure industry-standard dimensions
- ▶ Intelligent model export to CAD solutions eliminating the need to remodel and redefine attributes





## SYSTEM REQUIREMENTS

Operating System .....	Microsoft® Windows® 8; Microsoft Windows 7 including Enterprise, Ultimate, Professional, or Home Premium edition; Microsoft Windows Vista (SP2 or later) including Enterprise, Business, Ultimate
Processor .....	.64-bit, dual-core processor
Memory .....	6 GB RAM
Graphics Card .....	OpenGL accelerated graphics card with minimum 1 gigabyte of memory
Disk Space .....	2 GB free disk space for installation

### Learn More at:

[www.trimble.com/3d-laser-scanning/edgewise](http://www.trimble.com/3d-laser-scanning/edgewise)

Contact your local Trimble Authorized Distribution Partner for more information

**NORTH AMERICA**  
Trimble Navigation Limited  
10368 Westmoor Drive  
Westminster CO 80021  
USA

**EUROPE**  
Trimble Germany GmbH  
Am Prime Parc 11  
65479 Raunheim  
GERMANY

**ASIA-PACIFIC**  
Trimble Navigation  
Singapore Pty Limited  
80 Marine Parade Road  
#22-06, Parkway Parade  
Singapore 449269  
Singapore